



Delta Methylmercury TMDL Nonpoint Sources Workgroup

Kickoff Meeting (v2)





Meeting Agenda

Item	Description / Desired Outcome	Lead	Time Allotted (min)
Welcome and Introductions	Welcome and introductions of all meeting participants	All	10
Preview Agenda	Preview agenda	Stephen McCord (MEI)	5
Scope of Work	<ul style="list-style-type: none"> • Regulatory-driven schedule • Roles & responsibilities • Communication (website, listserv, meetings) 	Stephen McCord (MEI)	15
Spatial Analysis and Land Use Survey	<ul style="list-style-type: none"> • Review GIS map layers and analysis to identify major irrigated ag and managed wetland types in the Delta • Review draft survey instrument & addressees 	Kevin Petrik & Aaron Will (Ducks Unlimited)	60
Knowledge Base	<ul style="list-style-type: none"> • Review draft knowledge gained and gaps analysis report • Describe ongoing studies 	Lisamarie Windham-Myers & Josh Ackerman (USGS)	60
Sign On Process	<ul style="list-style-type: none"> • Process for meeting April 20 reporting deadline • Stakeholders to contact 	Stephen McCord (MEI)	20
Meeting Wrap-Up	<ul style="list-style-type: none"> • Review action items • Set next meeting date & agenda 	Stephen McCord (MEI)	10



Phase 1

TMDL
Review
~2021

Phase 2

2030

Effective Date →

- **Control studies**
- Pollution prevention
- Exposure reduction
- Discharge monitoring

- *Statewide objective & TMDL*
- *Upstream TMDLs*
- *Pilot offsets projects*

Re-assess allocations
& schedules

- Implement methylmercury controls

Attain Allocations

You Are Here



Regulatory Deliverables

Name & Address

April 19, 2012

Dear Executive Officer:

We are committed to participating in a project to develop a coordinated, comprehensive Control Study Workplan.

The coordinated group is called the NPS Workgroup...

We request an extension to submit the Workplan...

Sincerely,

<Signature>

<logo>



Delta Methylmercury TMDL Stakeholder Group's

For Implementing the
Delta Methylmercury Control Program

February 2013

Collaborative Control Study
Generic Workplan





Your Steering Committee

- Mary Lee Knecht (SRWP)
- Stephen McCord (**McCord Environmental**)
- Sally Liu (The Nature Conservancy)
- Mark Stephenson, Wes Heim (MLML)
- Carol Atkins (CA Dept. Fish & Game)
- Josh Ackerman, **Lisamarie Windham-Myers Collin-Eagles-Smith** (USGS)
- Kevin Petrik, **Aaron Will Jeff McCreary** (Ducks Unlimited)
- **Kari Fisher** (CA Farm Bureau Federation)



Nonpoint Sources Workgroup

Steering Committee

Participants (“Cooperating Entities”)

Regulators

- USEPA
- CV-RWQCB

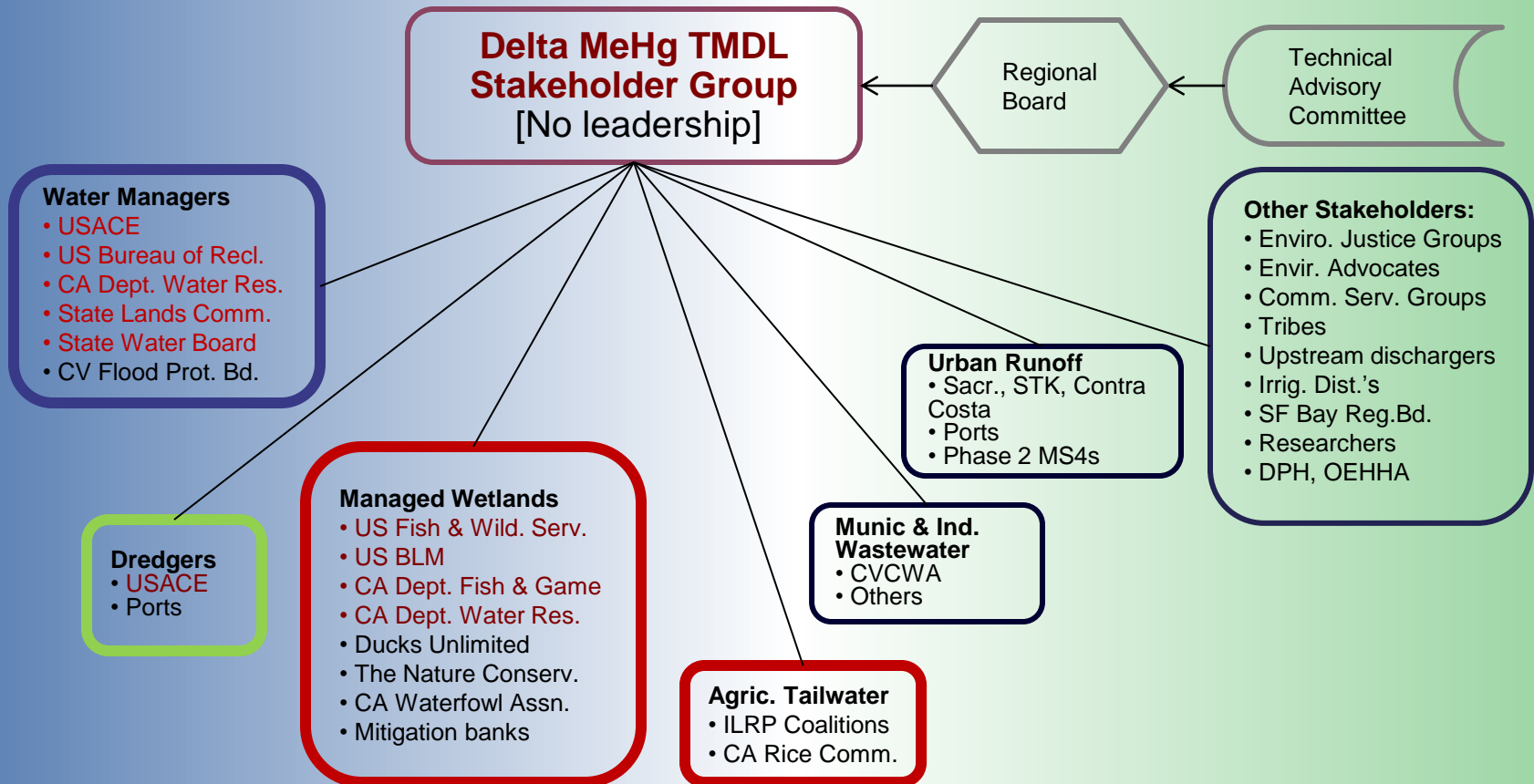
NPS Dischargers & Rep.s

- BLM
- US Fish & Wildlife Service
- CA Dept. Fish & Game
- DWR
- CA State Lands Comm.
- California Rice Comm.
- No. Cal. Water Assoc.
- San Jo. Co. RCD/San Jo. Co. & Delta WQ Coal.
- South Delta Water Agency
- The Nature Conservancy
- Ducks Unlimited
- California Waterfowl Ass’n .
- Westervelt Ecol. Serv.

Researchers

- US Geological Survey
- Cal. Dept. Fish & Game / MLML
- Office of Water Programs, CSUS

Delta MeHg TMDL Stakeholders



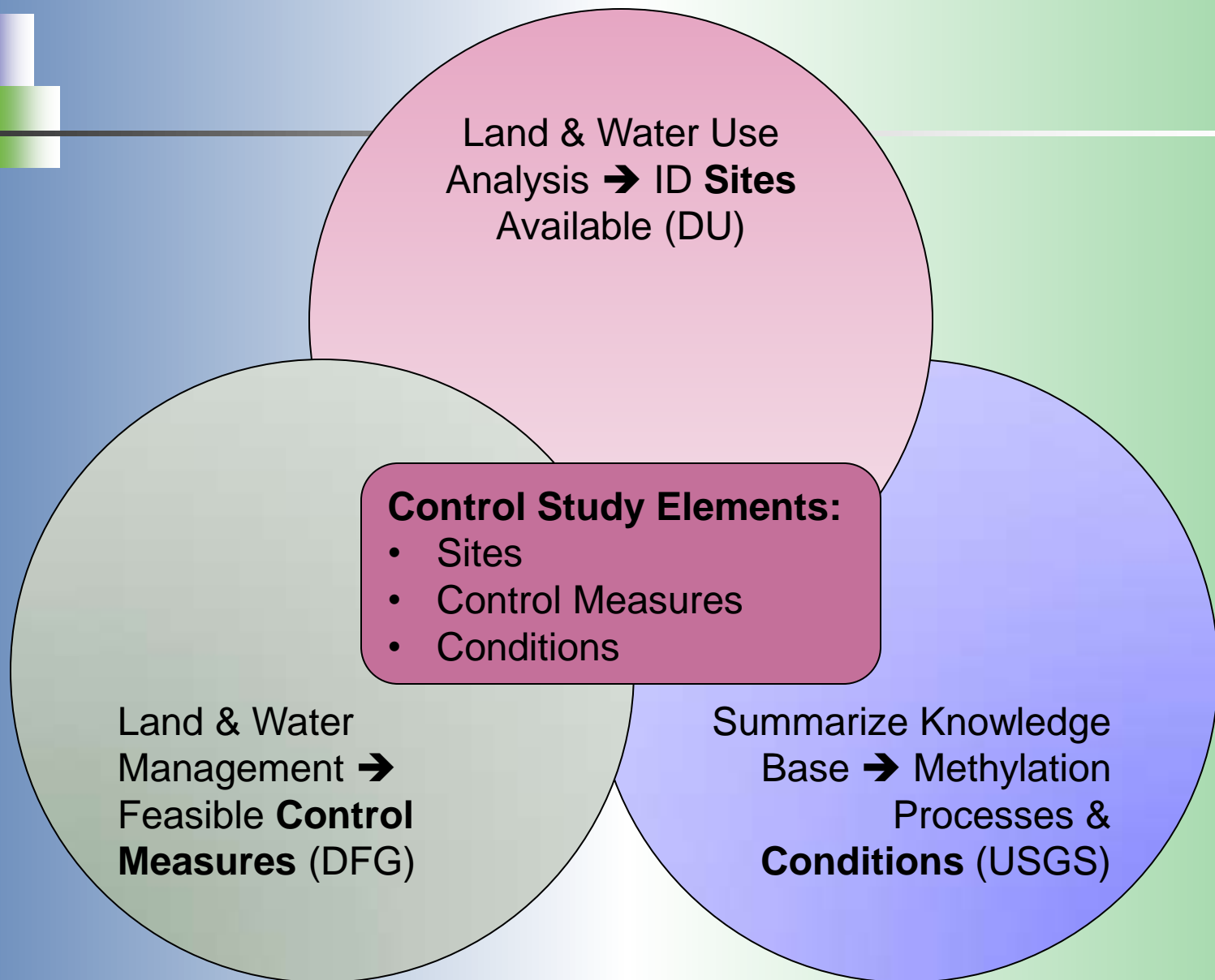


The Control Study Question

What “practices” can realistically & effectively be implemented given

- **Processes** controlling methylmercury behavior, and
- **Constraints** on actual land/water management practices?

Workplan Components





Six Project Tasks

1. Manage and Administer Project
2. **Develop Knowledge Base**
3. *Plan for Nonpoint Sources Control Studies*
4. *Determine Budget for Control Studies*
5. Communicate with Stakeholders
6. Prepare Final Project Report




Cooperating Entities' Roles

- Vet recommended Management Practices
- Prioritize control study source types
- Prioritize study elements by costs, replicability, etc.
- Contribute to implementation
 - Control study sites & projects
 - Matching funds (in-kind and/or \$\$)

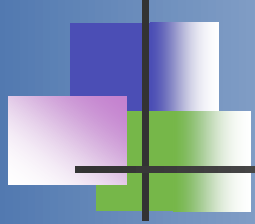


Communications

- Listserv started, through Stephen
- Web site: <http://delta-mercury-nps.org/>
- In-person meetings



Delta Methylmercury TMDL Nonpoint Sources Workgroup
for Managed Wetlands and Irrigated Agriculture



Questions about the Scope?





Collaboration Sign-on Process

- Stephen distribute template organizational report (Feb. 29)
- Entities who received Reg. Bd. letter respond with signed organizational report (April 20)
- NPS Workgroup Cooperating Entities:
 - Participate in meetings
 - Review draft deliverables
 - Contribute to workplan implementation



Who May Be Missing?

- **Focus:** Managed wetlands and irrigated ag lands in the Delta
- **Useful:** Scientists, regulators, consultants
- **Parallel:** “Open water” load sources (water/flood managers, dredgers)
- **Related:** Upstream sources



Near-Term Activities

- TAC mtg: March 6
- Org. Rpt. *template*: March 16
- DTMC mtg: March 28
- Org. Rpt. *due*: April 20



Future Meetings

- ~3 hour meetings, 3rd Tuesdays
- Locations: ?

Mtg #	Main Topic	Dates
	TAC meeting	March 6
2	Conference call – TAC recap, sign-on status, review status	March 20
	DTMC meeting	March 28
3	Final Synthesis & Land Use; Man. Practices	May 15
4	Study Design	July 17
5-6	Workplan, budget & financing	Sept-Nov
7-8	Final Workplan, next steps	Jan-Mar 2013